

NATIONAL GIST TUMOUR BANK

**NOBODY WANTS GIST TUMOURS
WE DO....**

THE NATIONAL GIST TUMOUR BANK LAUNCHED AT NCRI - NEWCASTLE

Gastro Intestinal Stromal Tumours (GIST) are rare. Around 900 new patients are diagnosed with GIST cancer in the UK each year.

A national GIST tumour bank now exists in Newcastle.

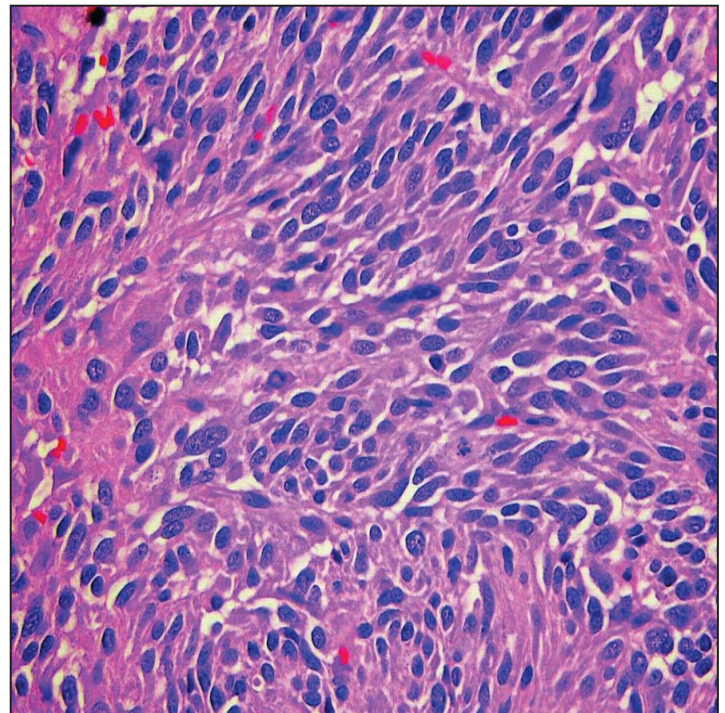
What does this mean for you?

- This bank is a valuable resource that will support GIST cancer research locally, nationally and internationally.
- It will provide researchers with a diverse selection of high quality GIST tumour specimens and clinical data obtained by dedicated tumour bank staff who follow strict procedures and ethical guidelines.
- Research will progress faster if there is a good supply of GIST tissue upon which to test potential treatments and develop new diagnostic tests.

How will the Tumour Bank Operate?

Operating within the NICR in Newcastle, the GIST Tumour Bank will coordinate the collection, storage and distribution of a variety of paediatric and adult biospecimens including fresh, frozen and paraffin blocks in addition to blood samples and clinical data.

Working in collaboration with pathologists, medical oncologists, surgeons and other hospital personnel, specially trained staff will obtain patient consent, collect samples and assemble clinical information about each donor and their corresponding specimens.



HOW YOU CAN HELP THE GIST TUMOUR BANK...

If you are a GIST patient who has had or are about to have a GIST tumour removed.

Please request that some of your tumour tissue is either sent to or registered with the National GIST tumour bank.

CONTACT INFORMATION

Website	www.ncl.ac.uk/nbb/collections/
Contact Person	Andy Hall
Address	NICR, Medical School, Framlington Place, Newcastle, NE2 4HH
Phone	0191 246 4411
Email	andy.hall@ncl.ac.uk

National GIST Tumour Bank
Sincere thanks to Professor Andrew Hall
and GIST Support UK

NATIONAL GIST TUMOUR BANK

INFORMATION FOR CLINICAL STAFF



Access to primary clinical samples (tumour and matched normal blood) is vital to progress our understanding of rare tumours such as [GIST](#).

With your help we can set up a national collection of samples available to anyone with a good quality research proposal.

Please try to assist in this research by sending samples to the:

National GIST biobank

If you have samples to donate or register please contact:

Professor Andy Hall andy.hall@ncl.ac.uk

for details of the consent and donation process.

FREQUENTLY ASKED QUESTIONS...

Has ethical approval been obtained to do this study? Yes

The Newcastle Cancer Centre Biobank is a REC approved Research Tissue Biobank which allows collection from any Trust within the NHS (12/NE/0256) from patients over the age of 16.

Is the Biobank covered by an HTA licence? Yes
Samples are collected under an HTA research licence (12534)

Will we need to obtain an HTA licence? No
As long as samples can be transported within 7 days of being made available for research.

Will I have to obtain informed consent to use the samples in research? Yes
A full protocol with the necessary forms can be sent on request.

Will my R&D department need to approve the collection of samples? No
But they will need to be informed that collection is intended.

What kind of samples do you need?
Ideally we would like samples of:

- fresh frozen tumour
- a stain H&E slide and
- a matched sample of normal blood
- clinical data

Will we have to pay for transport? No
We will meet all the costs associated with transport.

What should we do if our hospital already operates a GIST tumour bank locally?
Please make sure that your samples are registered with the [National GIST Tumour bank in Newcastle](#)